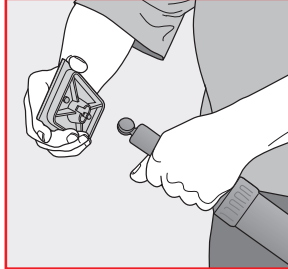


How the Tight-Seal™ accessories work

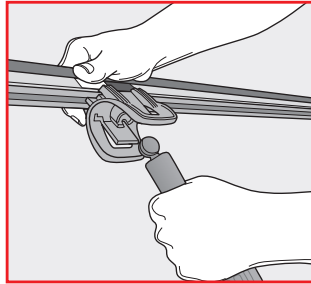
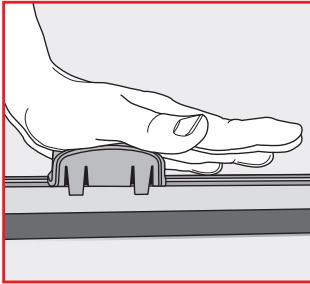
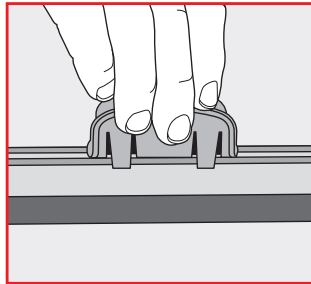
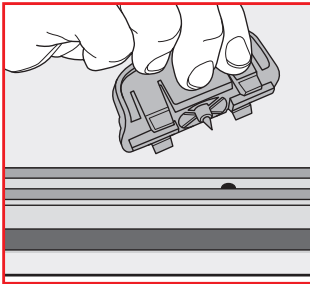
Set up your barrier:

Set up a ZipWall® barrier in desired configuration with the poles at least 1.5m apart. Allow an extra 10cm of plastic to overlap the head at the top of each pole.



Installing the Tight-Seal Rail:

Each Tight-Seal Rail requires the use of one ZipWall® pole with the head and plate removed. Simply pull the head straight up and off.

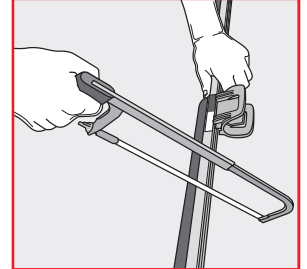


Setup the Tight-Seal Rail:

To install the clip on the Tight-Seal Rail, line up the pin under the clip with the hole on the Tight-Seal Rail. Put the clip on the Tight-Seal Rail with the pin in the hole and then press down hard. The clip will snap onto the Tight-Seal Rail. The clip is now permanently attached to the Rail. Snap the Clip on the ball at the top of the ZipWall® pole. Now, with the Tight-Seal Rail attached to the pole, raise it into place, pressing the barrier against the ceiling.

Fits any length:

With multiple Tight-Seal Rails you can seal any span. The Tight-Seal Rail easily overlaps each other allowing you to adjust to any barrier length.

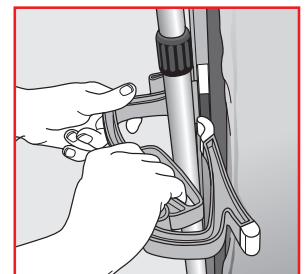
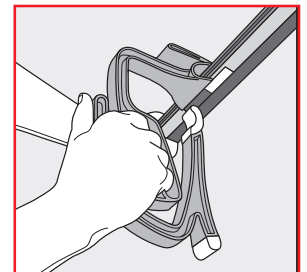
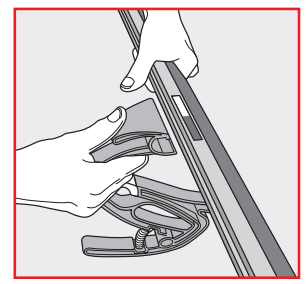


Customize:

If you need to create a custom length of Tight-Seal Rail, cut the aluminum and foam to the desired size using a hacksaw. Remove the plastic end from the discarded length of Tight-Seal Rail by pulling it straight out using pliers. Then press this plastic end into the newly cut Tight-Seal Rail.

Using the ZipWall® Side-Seal Clamp:

First, set up a plastic barrier using the ZipWall® barrier system. At the wall end of the barrier place a pole so that the top plate touches the wall at the ceiling, and at the floor the pole is no more than two inches away from the wall. Use a GripDisk™™ as needed. Also, allow an extra foot of material at each wall. Attach the Side-Seal Clamp to the Tight-Seal Rail by pressing the thumb release. Place the Tight-Seal Rail into Side-Seal Clamp's rail catch and release thumb pressure. To center the Side-Seal Clamp on the rail, place at the Tight-Seal Rail label.



Put the Side-Seal Clamp and Tight-Seal Rail into place:

Open the Side-Seal Clamp by squeezing the handles together, as shown. While clamp is open, place the Tight-Seal Rail between the plastic barrier and the pole moving the clamp so that the curved rubber end is between the pole and wall. Release the pressure allowing the rubber end to grasp the pole. This will then push the Tight-Seal Rail against the plastic barrier material and the wall.